

## Rabbit anti-human Tissue Factor IgG

Product No. ADG4502

### Description

Tissue Factor (TF) is a 45 kDa transmembrane cell surface glycoprotein known for its role in initiating coagulation. TF is comprised of three domains: an extracellular domain (aa 1-219), followed by a hydrophilic spanning domain (aa 220-242) and a cytoplasmic tail (aa 243-263).

The antibody is derived from the sera of rabbits immunized with recombinant human Tissue Factor (product no. ADG45). The IgG fraction of immunserum was isolated by affinity chromatography on Protein G-Sepharose.

### Properties

The antibody binds to both native and recombinant human Tissue Factor.

### Presentation

Screw-capped clear glass vial containing 1.0 mg of purified IgG lyophilized from 1 mL PBS with 200 mM mannitol, pH 7.5.

### Reconstitution

Add 1 mL of filtered deionized water. Agitate gently for 5 minutes.

### Storage and Stability

Store unopened vials at 2 - 8 °C until the expiration date shown on label.

Store reconstituted antibody in aliquots at -20 °C or colder. Stable for at least 6 months; avoid repeated freeze and thaw cycles.

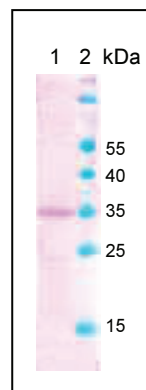
### Applications

#### ELISA

The antibody can be used as capture or detection antibody in ELISAs.

#### Western Blot Analysis

The antibody is suitable for Western blot analysis. A concentration of 0.1-0.5 µg/mL is recommended for the primary incubation.



Lane 1: rec. human Tissue Factor a single band at approximately 35 kDa visualized under reducing conditions.

Lane 2: Molecular weight marker

### Distributed by:

**LOXO** GMBH

IMMUNOLOGIE • MOLEKULARBIOLOGIE  
 BIOCHEMIE • PRODUKTE UND SYSTEME

Gerhart-Hauptmann-Str. 48  
 69221 Dossenheim

Tel +49 6221 868023

Fax +49 6221 8680255

www.loxo.de - info@loxode

#### Hinweis/Note:

Der Packungsbeileger dient nur als erste Information. Der relevante Packungsbeileger liegt der Ware bei.  
 The datasheet is for information purposes only. The current datasheet will be enclosed with product shipment.

For research use only!

ADG4502©08072019